

USE AND MAINTENANCE

Instructions for cleaning, painting and repairing Troldtekt® acoustic panels

These instructions apply to use and maintenance after installation of Troldtekt® panels. You can find additional information at www.troldtekt.com. Contact our technical department for further instructions.

CLEANING

After installation

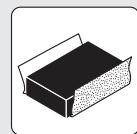
It is always a good idea to remove any dust from the installation work from the surface of the acoustic panels with a vacuum cleaner. The easiest and gentlest way to do this is with an ordinary brush nozzle.

If the installation process has left lines or other dirt on natural wood panels, you can remove the marks/dirt using a slightly damp cloth or by sanding with fine-grained sandpaper.

For painted panels, use Troldtekt touch-up paint. Please note that any touch-up paint in custom colours must be ordered together with the acoustic panels to ensure a perfect colour match.

Regular cleaning

Troldtekt acoustic panels usually do not need special care. However, we recommend regular cleaning at the same time as other surfaces. Use a vacuum cleaner with a brush nozzle or a slightly damp cloth.



PAINTING

Choice of paint

When painting Troldtekt acoustic panels, the process depends on whether you are painting untreated natural wood panels or factory pre-painted Troldtekt panels. Even more important is your choice of paint type and colour.

For factory pre-painted Troldtekt panels, use a water-based acrylic paint. The composition of the new paint must be compatible with the existing paint; in other words, it must be of the same quality and type.

The amount of paint to apply depends on the type of paint, its viscosity, coverage, the application method and the nature of the substrate. Only use paint types that are certified as being free of hazardous substances.

Equipment and paint application

Apply the paint using a paint sprayer (an airless sprayer, for example). To ensure adequate paint coverage, apply each coat from different directions/angles. Apply the paint using gentle movements while making sure not to close the fibre structure completely with excessive paint. When applying two coats of paint, ensure that the first coat is completely dry before applying the second coat.

When painting Troldtekt panels that have already been installed, continually check the painting process to ensure a uniform result. Carefully follow the manufacturer's instructions for equipment use.

For smaller surfaces or when freshening up paint of the same colour, apply the paint thinly using a suitable paint roller.

Always make sure that the panel structure does not become completely blocked with paint. Paint the edges in the same colour as the surface of the acoustic panel.

How to protect adjacent surfaces

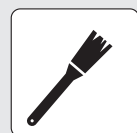
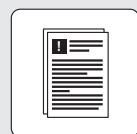
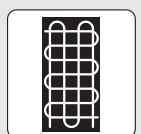
Adjacent surfaces, windows and floors must be properly covered. Use water to remove any spilled paint, while it is still wet. Dried paint must be removed with paint remover, which may damage the surface.

Safety information

Always carefully read information regarding protective measures described in the paint manufacturer's product safety data sheets, so you know when to protect your head, eyes, lungs and skin by wearing a mask, safety glasses, gloves and appropriate workwear.

Touch-up paint

To cover scratches resulting from installation etc., we recommend Troldtekt touch-up paint, which is available separately in the standard Troldtekt colours white 101, grey 202, grey 208 and black 207. Please note that any touch-up paint in custom colours must be ordered together with the acoustic panels to ensure a perfect colour match.



REPAIRS

Repairing holes

If holes/cracks appear in the acoustic panels, they can easily be repaired using commonly available materials etc.

In the case of major damage – for example from moisture or soot – we recommend replacing the affected panel.

Minor repairs

This method is suitable for the individual repair of small holes. You will need:

- Sealant – e.g. glue or cement*
- An extra Troldtekt acoustic panel with the same structure as the damaged one – possibly a product sample
- A Stanley knife
- Troldtekt touch-up paint



Apply sealant



Using a Stanley knife, cut a small piece of cement-bonded wood wool out of a surplus panel or a sample panel



Cut the cement-bonded wood wool to size, and use it to fill the hole

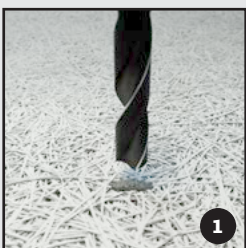


Use touch-up paint with the same colour as the panel

Large repairs

Use the following method for repairing large holes. You will need:

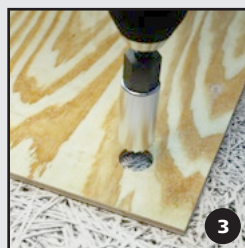
- Sealant – e.g. glue or cement*
- An extra Troldtekt acoustic panel with the same structure as the damaged one – possibly a product sample
- Wood drill
- Hole saw set
- Troldtekt touch-up paint



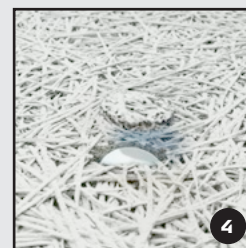
Use the wood drill to make the holes equal in diameter



Apply sealant



Use the cup drill to drill out small pieces of cement-bonded wood wool from a surplus panel or sample. The pieces must be the same diameter as the holes



Place the drilled pieces of cement-bonded wood wool in the holes with sealant



Use touch-up paint with the same colour as the panel

**The panels can be disposed of in the same way as other cement-bonded wood wool waste if you use Portland cement to affix the pieces of cement-bonded wood wool, as the cement is free of harmful substances. If you choose to use glue, we recommend using solvent-free non-toxic glue. Also, do not use silicone-based glue if it is going to be painted.*

This information sheet is produced on the basis of the latest knowledge within the area and is only intended as a guide.